

## Overview Power Pick Global KeyTec

APAC Business Transformation – Basic Training, Singapore, June 15-19

## Power Pick Global

Power Pick Global is a suitable solution, when customers

- store goods in a range of various different sizes
- have more than 8,000 articles to manage along with their storage locations
- use various storage systems (flow rack systems, pallet racking, dynamic storage systems)
- strive to reduce order picking times
- have a throughput rate of 200 picks/hour
- require various storage and order picking strategies
- run more than 6 machines



## The new structure of since Power Pick Global 4.0

### The following packages are obsolete

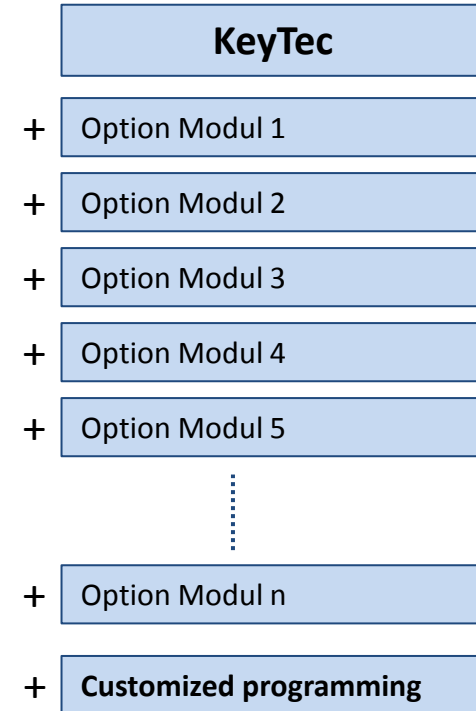
- Small Business
- Order Processor
- Order Processor Plus
- Warehouse Edition

### The following package remains:

- ✓ Communicator Pro  
(will be called Communicator Pro 2 due to structural changes)

## New structure of Power Pick Global since version 4.0

- The core module KeyTec is the basis of the new Power Pick Global 4.0 structure
- All other modules of the Power Pick Global 4.0 can be optionally selected
- An optional module consists of at least one, mostly several functions
- Customized programming is available



## Core Functions KeyTec

- Core Program (Rule Engine)
- Machine Control (MCS)
- User Management
- Material Management
- Stock Management
- Bin Management
- Location Management
- Event Management
- Report Generation (lists, reports)
- History
- Unscheduled Stock Movement
- Dynamic Pick / Put Lists
- 1 User-License  
(competing license model)
- Manual Host-Interface (CEU)
- Attachment management

## Core Module KeyTec

- PPG KeyTec is the basis module of the PPG offering a simple storage and retrieval system.  
The KeyTec module is the basis for all PPG applications and combinations of optional modules
- The module controls the stock of materials, records all puts and retrieval of materials and has an easy functionality for reporting using predefined screen lists and reports.
- The KeyTec module also includes the user management module to manage users and user rights.

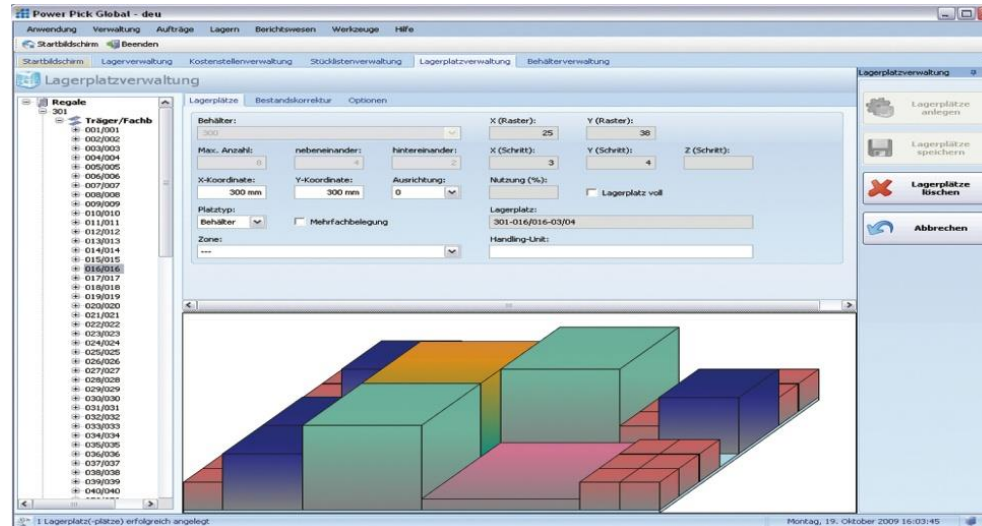
## Core Module KeyTec

- The KeyTec module includes bin and location management with the functionality to create, edit and manage storage bins and locations.



## Core Module KeyTec

- The material management module is also included in the KeyTec module where the materials and material properties can be managed.
- Different storage strategies and rules can be defined on material level by material properties.

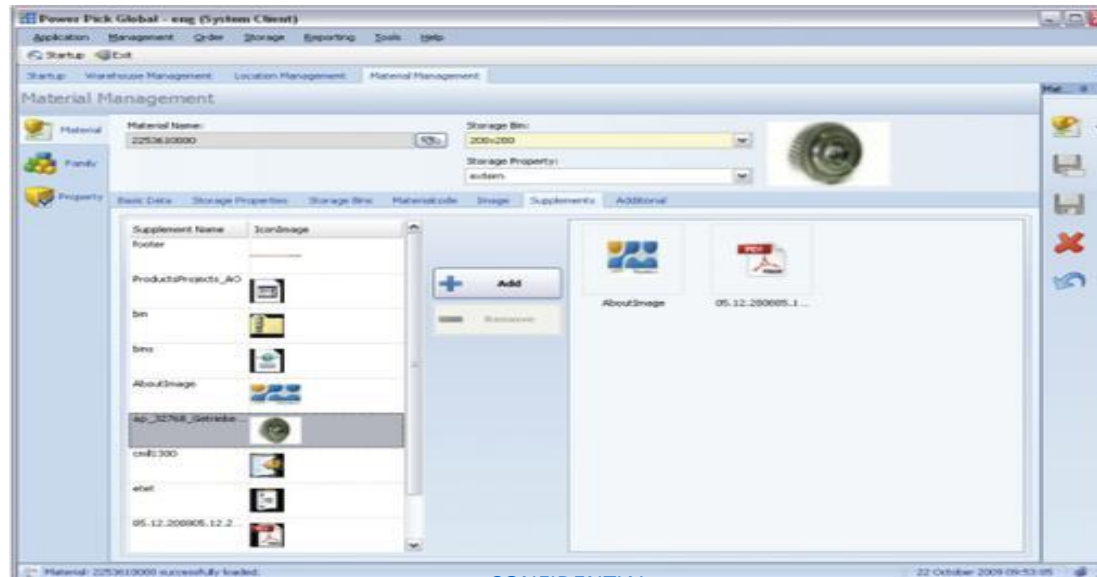


CONFIDENTIAL



## Core Module KeyTec

- Manual operation by put and pick on material level is included. Functionality for operating on order level and with automatic host interface is included in optional PPG modules.



CONFIDENTIAL

## Additional Power Pick Global Functions

- Label printing
- High Management
- Weight Management
- Order Management
- Rush Orders
- Area Management
- Batching
- Batch Lights
- Reports (Expert)
- Charge-/ Qualification Management
- Display Tool
- Host Interface
- Host Interface (XML prepared)
- Interface to Peripheral Devices (Scale,..)
- Kiosk Storage
- Cost Center
- Client Management
- Multi-User-Picking
- External Device Control

## Additional Power Pick Global Functions

- Inventory
- SAP Interface IDOC
- Serial Number Management
- SMD-Management
- Parts List
- Visual Storage Location
- Zone Management
- Additional DB Fields
- Data Migration (PP5000 -> PPG)
- Additional User-Licenses
- License Access & Performance (Visual Position Display, Horizontal Optimization, Machine Control)
- Web Services
- Mobile Device
- Camera Module